



AMAR JYOTI MACHINERY CORP.
THE ONE STOP SOLUTION FOR MACHINES

nicon



PRODUCT CATALOGUE

MODULAR VISES
MILLING VISES

DRILL VISES
BENCH VISES

SELF CENTRING VISES
COMPOUND TABLES

GSTIN : 22AUFPA8634F1Z1

AMAR JYOTI
MACHINERY CORPORATION

MAIN BILASPUR ROAD, BHANPURI CHOWK, BHANPURI, RAIPUR-493221, CHHATTISGARH (INDIA)

WHATSAPP : +91 - 9522015586 +91 - 9522015584



AMAR JYOTI MACHINERY CORP.
THE ONE STOP SOLUTION FOR MACHINES

AMAR JYOTI MACHINERY

INDUSTRIAL MACHINERY

Visit At: WWW.AMARJYOTIMACHINERY.COM Email : raipur.amarjyoli@gmail.com

Code N-141 MECHANIC'S BENCH VICE

Ideal For:
Heavy Duty Metal Working Applications

Model	Jaw Width	Opening	Wt.
MBV75	75mm	100mm	6Kg.
MBV100	100mm	125mm	12Kg.
MBV125	125mm	170mm	21Kg.
MBV150	150mm	210mm	30Kg.
MBV200	200mm	240mm	38Kg.



-Ductile Cast Iron Body -Dovetailed Box Nut
-Inter-changeable Hardened & Knurled Steel Jaws

Code N-161 BENCH VICE UNBREAKABLE STEEL BODY

Ideal For:
Heavy Duty Metal Working Applications

Model	Jaw Width	Opening	Weight
BVU100	100mm	125mm	10 Kg.
BVU125	125mm	150mm	15 Kg.
BVU150	150mm	175mm	18 Kg.
BVU200	200mm	225mm	25 Kg.



-Unbreakable Steel Body with Pipe Jaws
-Inter-changeable Hardened & Knurled Steel Jaws.

Code N-501J BENCH VICE CROSS RIBBED (NICE BRAND)

Ideal For:
Heavy Duty Metal Working Applications

Model	Jaw Width	Opening	Weight
BVN65	65mm	75mm	3.5 Kg.
BVN75	75mm	100mm	5 Kg.
BVN90	90mm	110mm	7 Kg.
BVN100	100mm	125mm	11 Kg.
BVN115	115mm	135mm	12 Kg.
BVN125	125mm	150mm	16 Kg.
BVN150	150mm	175mm	19 Kg.
BVN200	200mm	225mm	30 Kg.
BVN250	250mm	300mm	54 Kg.
BVN300	300mm	330mm	58 Kg.



-Ductile Cast Iron Body & Unbreakable Dovetailed Box Nut

Code N-160 BENCH VICE HEAVY DUTY DOUBLE RIBBED

Ideal For:
Heavy Duty Metal Working Applications

Model	Jaw Width	Opening	Weight
BVD75	75mm	100mm	6 Kg.
BVD90	90mm	110mm	8 Kg.
BVD100	100mm	125mm	13 Kg.
BVD115	115mm	140mm	16 Kg.
BVD125	125mm	170mm	22 Kg.
BVD150	150mm	200mm	26 Kg.
BVD200	200mm	250mm	38 Kg.



-Ductile Cast Iron Body -Unbreakable Steel Box Nut.
-Inter-changeable Hardened & Knurled Steel Jaws.

Code N-186 BENCH EXTRA HEAVY DUTY VICE SWIVEL BASE

Ideal For:
Extra Heavy Duty Work Holdings

Model	Jaw Width	Opening	Weight
BVE100	100mm	125mm	11 Kg.
BVE125	125mm	150mm	22 Kg.
BVE150	150mm	175mm	26 Kg.
BVE200	200mm	250mm	36 Kg.



-Unbreakable Steel Body -Extra Deep Jaw Depth.
-Inter-changeable Hardened & Knurled Steel Jaws.

Code N-182 PRECISION TOOL ROOM VICE

Ideal For:
Heavy Duty Tool Room Metal Working Applications

Model	Jaw Width	Opening	Weight
TRV100	100mm	105mm	8 Kg.
TRV125	125mm	140mm	18 Kg.
TRV150	150mm	170mm	30 Kg.



-Ductile Cast Iron Body
-CNC Machined Body & Screw
-Hardened Steel Jaws
-Rear Jaws sliding

Code N-801 MULTIPURPOSE BENCH VICE

Ideal For:
Metal Working Applications & Round Jobs

Model	Jaw Width	Opening	Weight
MPV125	125mm	120mm	15 Kg.



-Ductile Cast Iron Body
-CNC Machined Body & Screw
-Inter-changeable Hardened & Knurled Steel Jaws
-Swivel Base

Code N-351 NICON SELF CENTERING CORNER WELDING VICE

Ideal For:
Right Angle Corner Welding Jobs

Model	Jaw Width	Jaw Opening
CWV100	100mm	70mm
CWV25	125mm	150mm



-Copper Plated Screw
-Ductile Cast Iron Body

Code N-176 WOOD WORKING VICE

Ideal For:
Wooden Working Applications

Model	Jaw Width	Opening	Weight
WW150	150mm	175mm	5Kg.
WW175	175mm	200mm	7Kg.
WW200	200mm	225mm	11Kg.
WW225	225mm	250mm	16Kg.



-Closed Grain Cast Iron Body
-Heavy Duty

Code N-177 WOOD WORKING VICE QUICK RELEASE

Ideal For:
Wooden Working Applications

Model	Jaw Width	Opening	Weight
WQR175	175mm	200mm	9.5 Kg.
WQR225	225mm	250mm	16 Kg.
WQR250	250mm	275mm	20 Kg.



-With Front Dog
-Closed Grain Cast Iron Body
-Heavy Duty

Code N-162 NICON DRILL MACHINE VICE HEAVY DUTY

Ideal For:
Drilling &
Tapping Machine

Model	Jaw Width	Opening
DMV75	75mm	75mm
DMV100	100mm	100mm
DMV125	125mm	125mm
DMV150	150mm	150mm
DMV200	200mm	200mm

-Accuracy in Parallelism of Jaws 0.03/100mm
-Unbreakable Steel Body



Code N-163 NICON DRILL MACHINE VICE DELUXE MODEL

Ideal For:
Drilling &
Tapping Machine

Model	Jaw Width	Opening
DVD75	75mm	75mm
DVD100	100mm	100mm
DVD150	150mm	150mm

-Accuracy in Parallelism of Jaws 0.03/100mm
-Unbreakable Steel Body



Code N-164 NICON PRECISION DRILL MACHINE VICE

Ideal For:
Drilling &
Tapping Machine

Model	Jaw Width	Opening
PDV100	100mm	100mm
PDV150	150mm	150mm

-Heavy Duty
-Closed Grain Cast Iron Body



Code N-167 NICON DRILL PRESS VICE (UNIGRIP)

Ideal For:
Drilling, Tapping &
Pantograph Machine

Model	Jaw Width	Opening
DPV75	75mm	75mm
DPV100	100mm	92mm
DPV125	125mm	100mm

-Accuracy in Parallelism of Jaws 0.02/100mm
-Unbreakable Steel Body



Code N-170 NICON 3-WAY DRILL PRESS VICE (UNIGRIP)

Ideal For:
Drilling, Tapping &
Pantograph Machines

Model	Jaw Width	Jaw Opening
3DPV100	100mm	94mm

-Accuracy in Parallelism of Jaws 0.02/100mm
-Unbreakable Steel Body



Code N-189 NICON 2 PC ADJUSTABLE MILLING MACHINE VICE

Ideal For:
Milling Machines

Model	Jaw Width	Opening
LMV 150	150 mm	Limitless
LMV 200	200 mm	Limitless

-Accuracy in Parallelisms of Jaws 0.02/100mm
-Closed Grain Cast Iron Body



Code N-168 NICON PRECISION TOOL MAKER VICE (SCREW TYPE)

Ideal For:
Grinding Machines

Model	Jaw Width	Opening
TMV60	60mm	60mm
TMV75	75mm	80mm
TMV75+	75mm	100mm
TMV100	100mm	105mm
TMV100+	100mm	125mm
TMV125	125mm	150mm
TMV150	150mm	150mm

Accuracy in Parallelism & All Surfaces 0.01/100mm
All Steel Hardened & Ground



Code N-168S NICON PRECISION TOOL MAKER SINE VICE (SCREW TYPE)

Ideal For:
Grinding Machines

Model	Jaw Width	Opening
SVS75	75mm	85mm

-Accuracy in Parallelism & All Surfaces 0.01/100mm
-All Steel Hardened & Ground
-Special Alloy Steel Body



Code N-169 NICON PRECISION TOOL MAKER STEEL VICE (PIN TYPE)

Ideal For:
Grinding Machines

Model	Jaw Width	Opening
TMVP50	55mm	80mm
TMVP75	75mm	100mm
TMVP100	100mm	125mm
TMVP150	150mm	175mm

-Accuracy in Parallelism & All Surfaces 0.01/100mm
-All Steel Hardened & Ground



Code N-169S NICON PRECISION TOOL MAKERS SINE TYPE (PIN TYPE)

Ideal For:
Grinding Machines

Model	Jaw Width	Opening
SVP75	75mm	105mm

-Accuracy in Parallelism & All Surfaces 0.01/100mm
-All Steel Hardened & Ground
-Special Alloy Steel Body



Code N-151 NICON PRECISION MILLING MACHINE VICE (Fixed Base)

Ideal For:
Milling Machines
Drilling Machines

Model	Jaw Width	Opening
MV100	100mm	100mm
MV125	125mm	125mm
MV150	150mm	150mm
MVF200	200mm	200mm



-Accuracy in Squareness 0.02/100mm
-Closed Grain Cast Iron Body

Code N-151S NICON PRECISION MILLING MACHINE VICE (Swivel Base)

Ideal For:
Milling Machines
Drilling Machines

Model	Jaw Width	Opening
MVS100	100mm	100mm
MVS125	125mm	125mm
MVS150	150mm	150mm
MVS200	200mm	200mm



-Accuracy in Squareness 0.02/100mm
-Closed Grain Cast Iron Body

Code N-153 NICON TILTING AND SWIVELING MACHINE VICE

Ideal For:
Milling Machines &
Grinding Machines

Model	Jaw Width	Opening
TSV75	75mm	75mm
TSV100	100mm	100mm
TSV125	125mm	125mm
TSV150	150mm	150mm
TSV200	200mm	200mm



-Accuracy in Parallelisms of Jaws 0.02/100mm
-Closed Grain Cast Iron Body

Code N-154 NICON 3-WAY TILT AND SWIVEL ANGULAR VICE

Ideal For:
Milling Machines &
Grinding Machines

Model	Jaw Width	Opening
TSTV75	75mm	75mm
TSTV100	100mm	100mm
TSTV125	125mm	125mm
TSTV150	150mm	150mm



-Accuracy in Parallelisms of Jaws 0.02/100mm
-Closed Grain Cast Iron Body

Code N-156 NICON PRECISION COMPACT UNIVERSAL MACHINE VICE

Ideal For:
Tool & Cutter Grinders,
Surface Grinders

Model	Jaw Width	Opening
CUMV100	100mm	72mm



-Accuracy in Parallelism of Jaws 0.02/100mm
-Unbreakable Steel Body

Code N-155 NICON SELF CENTERING SHAFT VICE

Ideal For:
Milling, Drilling &
Slotting Machines

Model	Jaw Width	Rod Holding Capacity
SCSV100	100mm	80mm

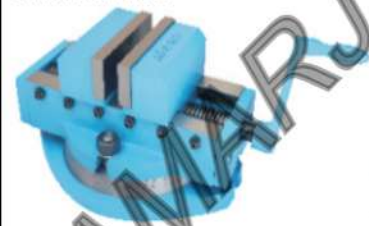


-Unbreakable Steel Body
-Available in Fixed Base

Code N-158 NICON SELF CENTERING VICE SWIVEL BASE

Ideal For:
Milling, Drilling Machine
Surface Grinders

Model	Jaw Width	Jaw Opening
SCVS100	100mm	100mm



-Accuracy in Parallelisms 0.02/100mm
-Closed Grained Cast Iron Body

Code N-158P NICON SELF CENTERING VICE FIXED BASE

Ideal For:
Milling, Drilling Machine
Surface Grinders

Model	Jaw Width	Jaw Opening
SCVF100	100mm	100mm



-Accuracy in Parallelisms 0.02/100mm
-Closed Grained Cast Iron Body

Code N-132 NICON SELF CENTRING LOCK DOWN JAW VICE

Ideal For:
Machining Centre &
Milling Machines

Model	Jaw Width	Max. Opening
SCV 150	150mm	150mm



-Accuracy in Squareness 0.02/100mm
-Ductile Cast Iron Body
-Available in Fixed Base
-Max. Clamping pressure 2000kg.

Code N-157 NICON COMPOUND SLIDING TABLE

Ideal For:
Milling, Drilling Machines
& Surface Grinders

Model	Table Length	Table Width
CST150	150mm	150mm
CST 200	200mm	200mm
CST 250	250mm	250mm
CST 300	300mm	300mm
CSTS 300	300mm	200mm



-With Calibration Wheel & Swiveling Table
-Precision Machined T-Slot.

Code N-310 NICON UNIVERSAL TILTING TABLE

Ideal For:
Milling, Drilling & Grinding Machines

Model	Length	Width
UTT100	125mm	100mm
UTT150	200mm	150mm
UTT200	250mm	200mm

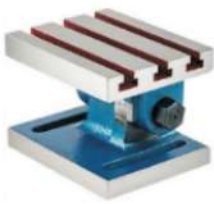


- Accuracy in Flatness of top Surface 0.01/100mm
- Closed Grain Cast Iron Body
- Available in Swivel Base

Code N-301 ADJUSTABLE ANGLE PLATE

Ideal For:
Milling Machines & Surface Grinders

Model	Length	Width	Height
AAP150	150mm	125mm	113mm
AAP200	200mm	150mm	135mm
AAP250	250mm	200mm	170mm
AAP300	300mm	250mm	205mm



- Closed Grain Cast Iron Body
- Accuracy of Top Surface 0.01/100mm

Code N-197 VERTICAL SLIDES FIXED & SWIVEL BASE

Ideal For:
Drilling, Milling Machines

Model	Length	Width
VS125	125mm	100mm
VSS125	125mm	100mm



- Made from Graded cast iron
- Machined T-Slot
- With Calibration Wheel

Code N-307 PRECISION MAGNETIC VEE BLOCKS (HARDENED)

Ideal For:
Grinding Machines

Model	Length	Width	Height
MVH100	100mm	75mm	95mm
MVH150	150mm	75mm	95mm



- Made from Special Alloy Steel
- Hardened & Ground Finished
- Accuracy 0.005/100mm

Code N-178 G-CLAMP DROP FORGED STEEL

Ideal For:
Wooden & Metal Clamping

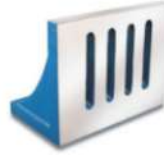
Model	Size
NGC-50	50mm
NGC-75	75mm
NGC-100	100mm
NGC-150	150mm
NGC-200	200mm
NGC-250	250mm
NGC-300	300mm



Code N-304 CAST IRON ANGLE PLATE SLOTTED

Ideal For:
Milling Machines & Surface Grinders

Model	Length	Width	Height
APS150	150mm	125mm	110mm
APS175	175mm	135mm	110mm
APS200	200mm	150mm	125mm
APS225	225mm	175mm	150mm
APS250	250mm	200mm	150mm
APS300	300mm	225mm	200mm



- Closed Grain Cast Iron Body
- Accuracy 0.005/100mm

Code N-311 TILTING TABLE

Ideal For:
Milling Machines & Surface Grinders

Model	Length	Width
TT 125	125mm	100mm
TT 175	175mm	125mm
TT 250	250mm	175mm
TT 375	375mm	250mm



- Closed Grain Cast Iron Body
- Accuracy of Top Surface 0.01/100mm

Code N-198 VERTICAL MINI SLIDE

Ideal For:
Drilling, Milling Machines

Model	Length	Width
MS90	90mm	50mm



- Made from Graded cast iron
- Machined T-Slot
- With Calibration Wheel

Code N-308 PRECISION STEEL PARALLELS

Ideal For:
Grinding Machines

Model	Length	Width	Height
PSP10	150mm	20mm	10mm
PSP15	150mm	35mm	15mm
PSP20	200mm	45mm	20mm
PSP25	250mm	55mm	25mm
PSP30	300mm	60mm	30mm
PSP45	300mm	75mm	45mm



- Alloy Steel Hardened & Ground -Accuracy 0.

Code N-179 TAP WRENCH DROP FORGED STEEL

Ideal For:
Hand Tap Holdings

Model	Size
NTW-6	6mm
NTW-10	10mm
NTW-13	13mm
NTW-20	20mm
NTW-25	25mm
NTW-28	28mm



Code N-171 NICON PRECISION LOCK DOWN JAW MACHINE VICE

Ideal For:
CNC Machining Centre & Milling Machines

Model	Jaw Width	Opening
MMV100	110mm	125mm
MMV150	160mm	175mm
MMV160+	160mm	225mm
MMV200	210mm	250mm
MMV200+	210mm	300mm



- Accuracy in Squareness 0.02/100mm
- Ductile Cast Iron Body
- Available in Fixed & Swivel Base
- Max. Clamping pressure 2500kg.
- Induction Hardened Slideways

Code N-131 NICON PRECISION COMPACT LOCK DOWN JAW MACHINE VICE

Ideal For:
CNC Machining Centre & Milling Machines

Model	Jaw Width
CMV150	150mm



- Accuracy in Squareness 0.02/100mm
- Ductile Cast Iron Body
- Available in Fixed Base
- Max. Clamping pressure 2500kg.
- Induction Hardened Slideways

Code N-181 NICON HYDRAULIC MACHINE VICE

Ideal For:
CNC Machining Centre & Milling Machines

Model	Jaw Width	Opening
HCMV150	150mm	210mm
HMV150	150mm	300mm



- Accuracy in Squareness 0.02/100mm
- High Alloyed Unbreakable Ductile Iron Body
- Available in Fixed & Swivel Base
- Max. Clamping pressure 4500kg.
- Induction Hardened Slideways

Code N-101 NICON PRECISION MODULAR MACHINE VICE

Ideal For:
CNC Machining Centre, Grinding Machine & Milling Machines

Model	Jaw Width	Opening
PMV100	110mm	160mm
PMV150	150mm	225mm
PMV150+	150mm	300mm



- Accuracy in Squareness 0.02mm
- High Alloyed Quality Resistance Steel Body
- Case Hardened HRC 60±2
- Max. Clamping pressure 3500kg.

Code N-102 NICON PRECISION TWO PIECE MODULAR MACHINE VICE

Ideal For:
CNC Machining Centre & Milling Machines for hold the Long Work Pieces

Model	Jaw Width	Opening
TPMV150	150mm	Unlimit



- Accuracy in Squareness 0.02mm
- High Alloyed Quality Resistance Steel Body
- Case Hardened HRC 60±2
- Max. Clamping pressure 3500kg.

Code N-108 NICON PRECISION MODULAR MACHINE VICE (with parallel top Jaws)

Ideal For:
CNC Machining Centre, Grinding Machine & Milling Machines

Model	Jaw Width	Opening
MPV125	125mm	200mm
MPV150	150mm	255mm
MPV150+	150mm	325mm



- Accuracy in Squareness 0.02mm
- High Alloyed Quality Resistance Steel Body
- Case Hardened HRC 60±2
- Max. Clamping pressure 3500kg.

Code N-121 NICON PRECISION SELF CENTRING 5-AXIS MACHINE VICE

Ideal For:
4th & 5th Axis CNC Machining Centre & Milling Machines

Model	Jaw Width	Opening
FAV125	125mm	150mm



- Accuracy in Squareness 0.01/100mm
- High Alloyed Quality Resistance Steel Body
- Case Hardened HRC 60±2
- Max. Clamping pressure 3500kg.

Code N-104 NICON PRECISION HIGH GRIP MACHINE VICE

Ideal For:
CNC Machining Centre & Milling Machines

Model	Jaw Width	Opening
HGV150	150mm	380mm



- Accuracy in Squareness 0.02/100mm
- High Alloyed Unbreakable Ductile Iron Body.
- Case Hardened Jaws HRC 60±2
- Max. Clamping pressure 4500kg.
- Induction Hardened Slideways

Code N-105 NICON PRECISION SELF CENTRING HIGH GRIP MACHINE VICE

Ideal For:
CNC Machining Centre & Milling Machines

Model	Jaw Width	Opening in Double Station	Opening in Single Station
SHGV150	150mm	160mm	380mm



- Accuracy in Squareness 0.02/100mm
- High Alloyed Unbreakable Ductile Iron Body.
- Case Hardened Jaws HRC 60±2
- Max. Clamping pressure 3500kg.
- Induction Hardened Slideways

Code N-106 SELF CENTRING HIGH GRIP SHAFT VICE

Ideal For:
CNC Machining Centre & Milling Machines

Model	Jaw Width	Opening in Standard Jaw	Opening in Reverse Jaw
SHSV150	150mm	160mm	380mm



- High Alloyed Unbreakable Ductile Iron Body.
- Case Hardened Jaws HRC 60±2
- Max. Clamping pressure 3500kg.
- Induction Hardened Slideways

Code N-315 TOOL HOLDER LOCKING DEVICE (VERTICAL & HORIZONTAL)

Ideal For:
CNC Tool Holder

Model	Suitable For Holder	Weight
LDVH30	BT30	4.5Kg.
LDVH40	BT40	4.5Kg.



-Closed Grained Cast Iron Body
-Aluminum Die Cast Holder

Code N-316 TOOL HOLDER LOCKING DEVICE (VERTICAL)

Ideal For:
CNC Tool Holder

Model	Suitable For Holder	Weight
LDV30	BT30	3Kg.
LDV40	BT40	3.5Kg.
LDV50	BT50	7Kg.



-Closed Grained Cast Iron Body
-Aluminum Die Cast Holder

Code N-751 CLAMPING KIT

Ideal For:
Work Holding on
Milling & Machining Center

Model	Suitable for T Slot Size (mm)
NCK14-12	14xM-12
NCK16-12	16xM-12
NCK18-12	18xM-12
NCK-18-16	18xM-16

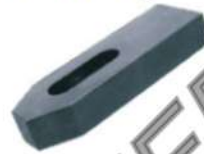


-Hardened & Tempered
-Black Finished

Code N-752 STRAP CLAMP

Ideal For:
Milling & Machinist Center
For Work Holding

Model	Suitable for Bolt	Overall Size (HxWxL)
NSC12-100	M-12	19x38x100
NSC12-125	M 12	19x38x125
NSC16-125	M 16	24x48x125
NSC16-160	M 16	24x48x160
NSC20-160	M 20	30x60x160
NSC20-200	M 20	30x60x200
NSC24-200	M 24	36x73x200
NSC24-250	M 24	36x73x250
NSC30-250	M 30	45x73x250



-Hardened & Tempered
-Black Finished

Code N-753 STEPPED STRAP CLAMP

Ideal For:
Holding of Casting,
Dies while Machining

Model	Suitable for Bolt	Overall Size (HxWxL)
NSSC12-65	M 12	15x30x65
NSSC12-100	M 12	19x38x100
NSSC12-150	M 12	19x38x150
NSSC16-125	M 16	24x48x125
NSSC16-160	M 16	24x48x160
NSSC20-160	M 20	30x60x160
NSSC24-200	M 24	36x73x200



-Hardened & Tempered
-Black Finished

Code N-753G GOOSE NECK CLAMP

Ideal For:
Holding of Press Tool,
Casting, Dies
while Machining

Model	Suitable for Bolt	Overall Size (HxWxL)
NGC12	M-12	125x40x40
NGC16	M-16	160x50x50
NGC20	M-20	200x60x70
NGC24	M-24	250x70x80



-Hardened & Tempered
-Black Finished

Code N-754 TAPPED END STRAP CLAMP

Ideal For:
Plastic Molding Machines

Model	Stud Size	Overall Size (HxWxL)
NTEC-12S	12-100	38x24x110
NTEC-12T	12-12-100	38x24x110
NTEC-14T	12-14-100	38x24x110
NTEC-16S	16-125	48x30x125
NTEC-16T	16-16-150	48x30x125
NTEC-18T	16-18-150	48x30x125
NTEC-20S	20-175	60x36x160
NTEC-20T	20-20-150	60x36x160
NTEC-22T	20-22-150	60x36x160
NTEC-24S	24-200	73x36x200
NTEC-24T	24-28-210	73x36x200



Code N-755 MOULDING CLAMP (WITH CLAMPING STUD & FLANGED NUT)

Ideal For:
Milling, Drilling &
Plastic Molding Machines

Model	Clamping Stud	Clamping Range	Clamp Size
NMC-12S	12-100	0-35	110x50
NMC-16S	16-125	0-40	135x60
NMC-20S	20-175	0-50	160x70
NMC-24S	24-200	0-60	180x80



-Hardened & Tempered (Bolt & Nut)
-Black Finished

Code N-756 MOULDING CLAMP (WITH CLAMPING T-BOLT & FLANGED NUT)

Ideal For:
Milling, Drilling &
Plastic Molding
Machines

Model	T-Bolt	Clamping Range	Clamp Size
NMC-12T	12-12-100	0-25	110x50
NMC-14T	12-14-100	0-25	110x50
NMC-16T	16-16-150	0-40	125x60
NMC-18T	16-18-150	0-40	125x60
NMC-20T	20-20-150	0-50	160x70
NMC-22T	20-22-150	0-50	160x70
NMC-24T	24-24-210	0-60	180x80



-Hardened & Tempered Bolt & Nut

Code N-757 UNIVERSAL STRAP CLAMP

Ideal For:
Holding Tools, Dies,
Castings & Flat
Components

Model	T-Slot Size	Dia x Pitch x L	Clamping Range
USC-12A	12	M-12x1.75x100	0-60
USC-12B	14	M-12x1.75x100	0-60
USC-16A	16	M-16x2.0x130	0-80
USC-16B	18	M-16x2.0x130	0-80
USC-20A	20	M-20x2.5x150	0-100
USC-20B	22	M-20x2.5x150	0-100
USC-24A	24	M-24x3.0x210	0-120
USC-24B	28	M-24x3.0x210	0-120



Code N-758 LEVELING JACK

Ideal For:
Supporting Castings,
Machining Components
Making & Positioning of
Layout



Model	Height Min. at Closed Position	Height Max. at Open Position
NLJ-1A	75mm	100mm
NLJ-1B	100mm	150mm
NLJ-2	120mm	170mm
NLJ-3	105mm	155mm

-Unbreakable Steel Body
-Hardened Spindle & Lock Nut

Code N-758L LEVELING JACK HEAVY DUTY

Ideal For:
Supporting Castings,
Machining Components
Making & Positioning of
Layout



Model	Height Min. at Closed Position	Height Max. at Open Position
NLJ-HD-FB	160mm	230mm

-Unbreakable Steel Body
-Hardened Spindle & Lock Nut

Code N-759 U-CLAMP

Ideal For:
Machines for Work
Holdings, Press Tool
Holding



Model	Suitable for Bolt	Overall Size HxWxL
TUC-12-160	M-12	160x38x24
TUC-16-200	M-16	200x48x30
TUC-20-250	M-20	250x62x38
TUC-24-250	M-24	250x62x38

-Hardened & Tempered
-Black Finished

Code N-760 STEP BLOCK

Ideal For:
Instant Height Adjustment
for Work Support



Model	Overall Size HxW	Height Min.	Adjustable Height Max.
NSB-1	32x19x28	21mm	42mm
NSB-2	67x37x28	38mm	95mm
NSB-3	117x68x28	70mm	180mm
NSB-4	67x37x47	38mm	95mm
NSB-5	117x68x47	70mm	180mm
NSB-6	156x92x47	94mm	230mm

-Hardened & Tempered -Black Finish

Code N-761 FLANGE NUT

Ideal For:
Better Force Distribution
on Clamping



Model	Thread Size	Spanner Size	Length
NFN-12	M-12	19mm	18mm
NFN-16	M-16	24mm	24mm
NFN-20	M-20	30mm	30mm
NFN-24	M-24	36mm	36mm

-Hardened & Tempered
-Black Finished

Code N-762 LONG NUT

Ideal For:
Better Force on Clamping



Model	Thread Size	Spanner Size	Length
NLN-10	M-10	17mm	16mm
NLN-12	M-12	19mm	18mm
NLN-16	M-16	24mm	24mm
NLN-20	M-20	30mm	30mm
NLN-24	M-24	36mm	36mm

-Hardened & Tempered
-Black Finished

Code N-763 EXTENSION NUT

Ideal For:
Joint Two Studs for
Increasing Clamping
Height



Model	Thread Size	Spanner Size	Length
NEN-10	M-10	17mm	24mm
NEN-12	M-12	19mm	36mm
NEN-16	M-16	24mm	48mm
NEN-20	M-20	30mm	60mm
NEN-24	M-24	36mm	72mm

-Hardened & Tempered
-Black Finished

Code N-764 ADJUSTABLE SUPPORTS PLATE

Ideal For:
Precise Height
Adjustment of Work
Piece



Model	Max. Height	Plate Thickness	Plate Overall Size
NASP-250	50mm	2mm	50x35
NASP-2100	100mm	2mm	50x35
NASP-2150	150mm	2mm	50x35

-Hardened & Tempered -Black Finish

Code N-766P PLAIN WASHER

Ideal For:
Designing Jigs Fixtures
and Clamping System



Model	Outer Dia	Inner Dia	Thickness
NPW-12	35mm	14mm	5mm
NPW-16	45mm	18mm	7mm
NPW-20	50mm	22mm	7mm
NPW-24	60mm	26mm	8mm

-Hardened & Tempered
-Black Finished

Code N-766C C-WASHER

Ideal For:
Spacer for Easy
Removal/ Insertion
in Clamping System



Model	Outer Dia	Inner Dia	Thickness
NPCW-12	50mm	10mm	12mm
NPCW-16	63mm	12mm	16mm
NPCW-20	80mm	12mm	20mm
NPCW-24	100mm	12mm	24mm

-Hardened & Tempered
-Black Finished

Code N-768 T-NUT

Ideal For:
Work Holding along with
Clamping Stud

Model	Thread Size	T Slot Size	Width
NTN 14-12	M 12	14	22
NTN 16-12	M 12	16	25
NTN 18-12	M 12	18	28
NTN 18-16	M 16	18	28
NTN 20-16	M 16	20	32
NTN 22-16	M 16	22	35
NTN 22-20	M 20	22	35
NTN 24-20	M 20	24	40
NTN 28-24	M 24	28	44
NTN 36-24	M 24	36	54



Code N-765M MOULD STUD

Ideal For:
Work Holding,
Tool Holding &
Mould Holding

Model	Dia of Thread	Total Length	Thread Length
NMS 12-100	M-12	100	30-40
NMS 12-125	M-12	125	30-50
NMS 12-150	M-12	150	30-65
NMS 12-175	M-12	175	30-80
NMS 16-125	M-16	125	40-50
NMS 16-150	M-16	150	40-65
NMS 16-175	M-16	175	40-80
NMS 16-200	M-16	200	40-100
NMS 20-150	M-20	150	50-60
NMS 20-175	M-20	175	50-70
NMS 20-200	M-20	200	50-80
NMS 24-175	M-24	175	60-70
NMS 24-200	M-24	200	60-80
NMS 24-225	M-24	225	60-90



Code N-765T T-BOLT

Ideal For:
Clamping Element on
T-Slotted Bed



Model	Dia of Thread	T-Slot Size	Total Length	Head	Head Thickness
NTB 12-12-80	M-12	12	80	18	7
NTB 12-12-100	M-12	12	100	18	7
NTB 12-12-160	M-12	12	160	18	7
NTB 12-14-80	M-12	14	125	22	8
NTB 12-14-100	M-12	14	100	22	8
NTB 12-14-125	M-12	14	125	22	8
NTB 12-14-160	M-12	14	160	22	8
NTB 12-14-200	M-12	14	200	22	8
NTB 16-16-100	M-16	16	100	25	9
NTB 16-16-150	M-16	16	150	25	9
NTB 16-16-200	M-16	16	200	25	9
NTB 16-18-100	M-16	18	100	28	10
NTB 16-18-150	M-16	18	150	28	10
NTB 16-18-200	M-16	18	200	28	10
NTB 16-18-250	M-16	18	250	28	10
NTB 16-18-300	M-16	18	300	28	10
NTB 20-20-110	M-20	20	110	32	12
NTB 20-20-150	M-20	20	150	32	12
NTB 20-20-200	M-20	20	200	32	12
NTB 20-22-110	M-20	22	110	35	14
NTB 20-22-150	M-20	22	150	35	14
NTB 20-22-200	M-20	22	200	35	14
NTB 20-22-300	M-20	22	300	35	14
NTB 24-24-150	M-24	24	150	40	16
NTB 24-24-200	M-24	24	200	40	16



WhatsApp
CLICK TO CHAT

Code N-765C CLAMPING STUD

Ideal For:
Clamping Element on
Machine Tool, Presses
& Fixtures

Model	Dia of Thread	Total Length	Thread Length
NCS 12-75	M-12	75	15-48
NCS 12-100	M-12	100	15-63
NCS 12-125	M-12	125	15-75
NCS 12-150	M-12	150	15-95
NCS 12-175	M-12	175	15-110
NCS 12-200	M-12	200	15-125
NCS 12-250	M-12	250	15-160
NCS 12-300	M-12	300	15-190
NCS 16-100	M-16	100	19-63
NCS 16-125	M-16	125	19-75
NCS 16-150	M-16	150	19-95
NCS 16-200	M-16	200	19-125
NCS 16-250	M-16	250	19-160
NCS 16-300	M-16	300	19-190
NCS 20-150	M-20	150	27-95
NCS 20-200	M-20	200	27-125
NCS 20-250	M-20	250	27-160
NCS 20-300	M-20	300	27-190
NCS 24-150	M-24	150	35-95
NCS 24-200	M-24	200	35-125



Code N-767 SELF ALIGNING PADS (PLAIN & RIBB)

Ideal For:
Where cast components are
being machined

Model	Dia	Length
SAP1	8mm	8mm
SAP2	10mm	10mm
SAP3	12mm	12mm
SAP4	16mm	16mm
SAP5	20mm	20mm



WhatsApp
CLICK TO CHAT

